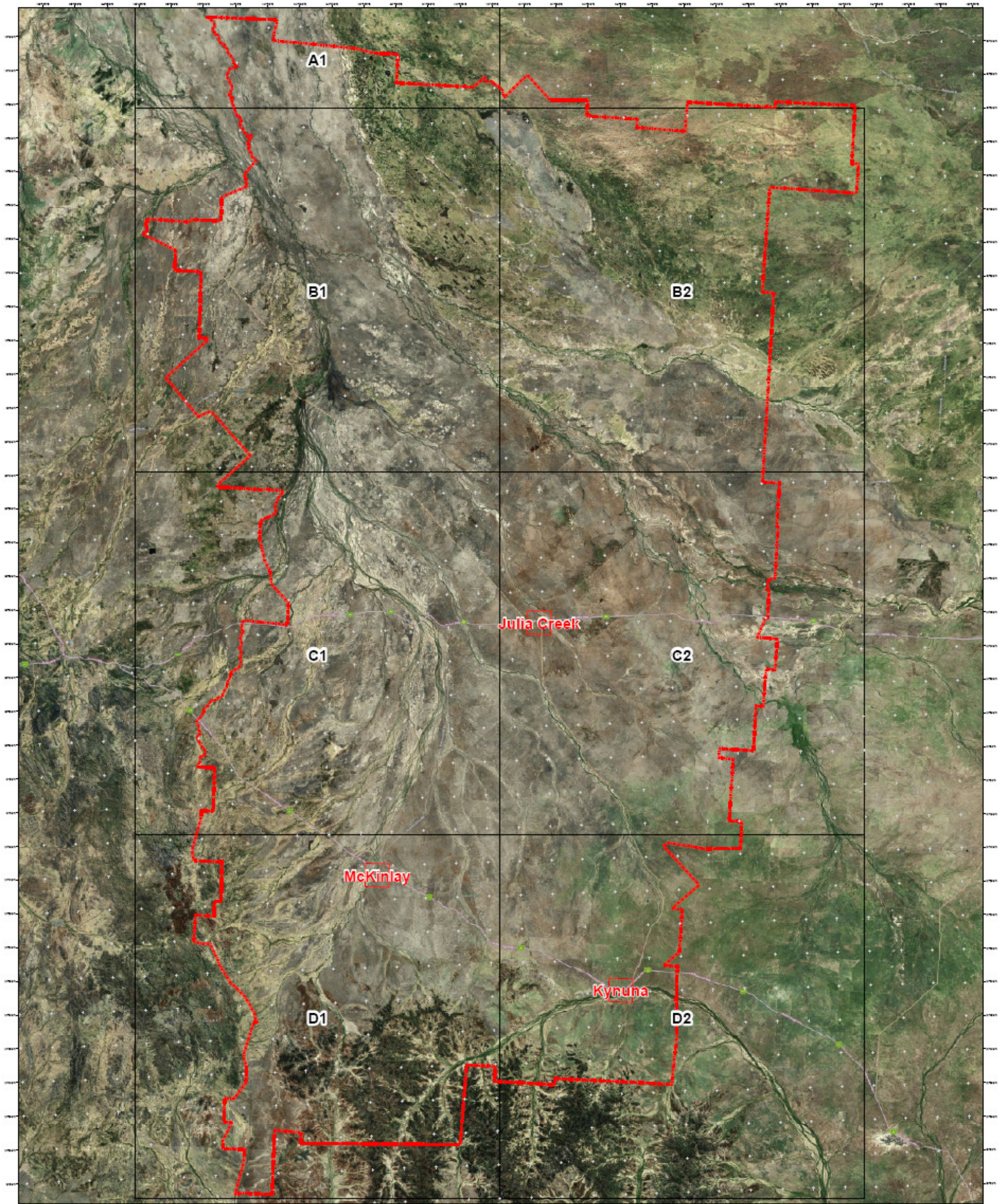


Annexure C – Hazard Mapping



- Legend**
- McKinlay Shire Boundary
 - Urban Map Series
 - Rural Map Series

Paper Size A0
 0 2.5 5 10
 Kilometres
 Map Projection: Transverse Mercator
 Horizontal Datum: GDA 1994
 Grid: GDA 1994 MGA Zone 55



McKinlay Shire Council
 Natural Hazard Risk Assessment

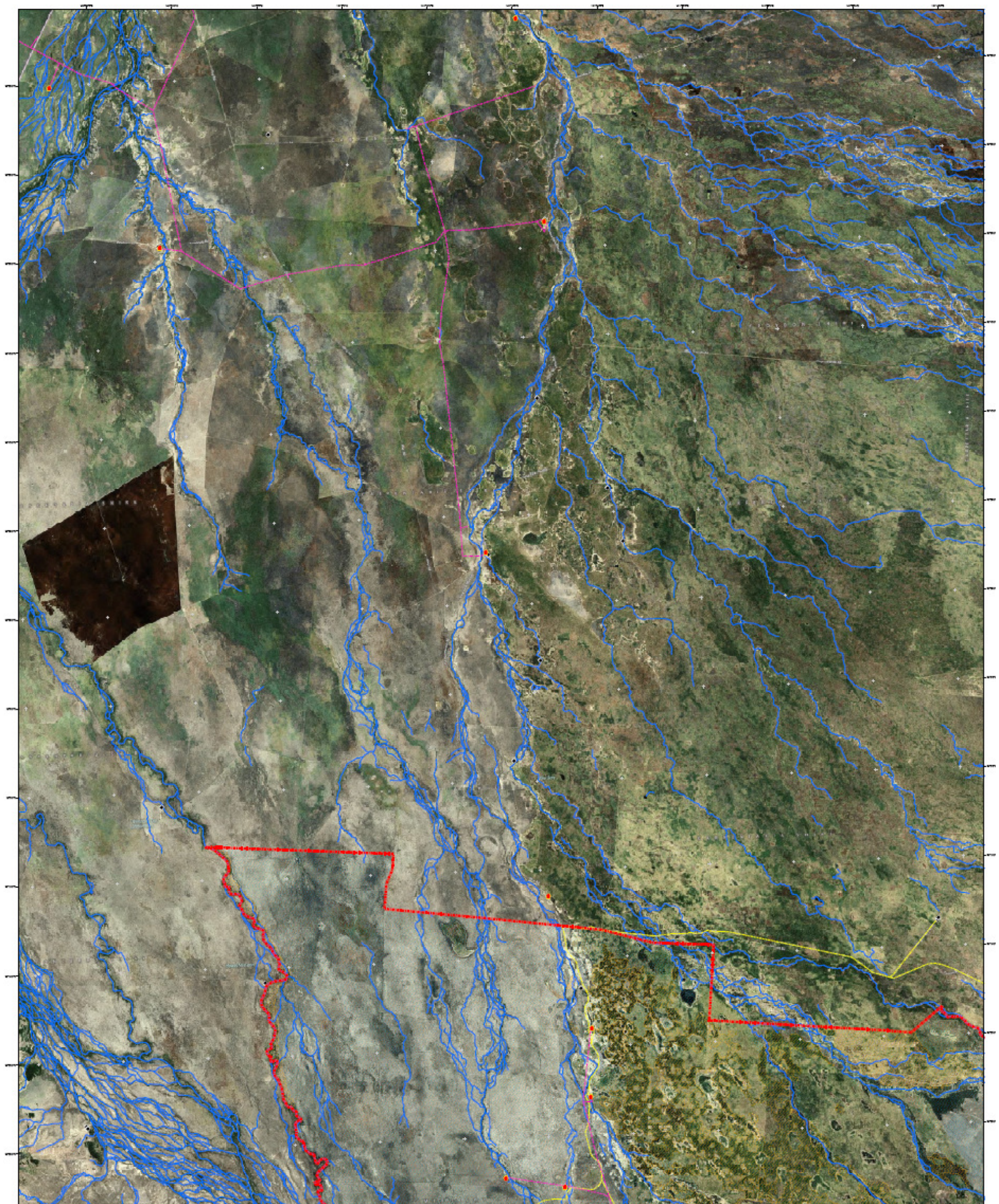
Job Number | 41-24860
 Revision | A
 Date | 23 May 2012

Map Index

Figure 1

© 2012 GHD. All rights reserved. GHD and the GHD logo are trademarks of GHD. All other trademarks are the property of their respective owners. GHD is not responsible for any errors or omissions in this document. GHD is not responsible for any damage or loss of any kind, including consequential damage, which may be incurred by any party as a result of the use of this document. GHD is not responsible for any damage or loss of any kind, including consequential damage, which may be incurred by any party as a result of the use of this document. Data source: GDA 1994 Shire Boundary, Catchment, Rail, Electricity Network, DEM, Geoscience Australia 2008 (SRTM30 PLUS), McKinlay Shire Council 2012 (McKinlay Road), GPR 2003 (Boulder Field) Ring Maps. Created by GHD.

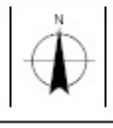
Map 1 – Map Index



Legend

Urban Map Series	Homestead	Rail Network	Bushfire Risk Medium	Landslip Hazard 0 - 15	Medium (20-25% slope)	Watercourse
Shire Boundary	Building / Structure	Electricity Network	Bushfire Risk High	Landslip Hazard Low (15-20% slope)	High (> 25% slope)	Queensland Inlet Floodplain Assessment Overlay
	Unsealed Road					

Paper Size A0
 0 25 50
 Kilometres
 Map Projection: Transverse Mercator
 Horizontal Datum: GDA 1994
 GCR: GDA 1994 MGA Zone 55



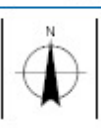
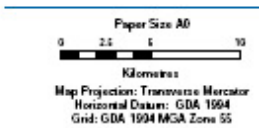
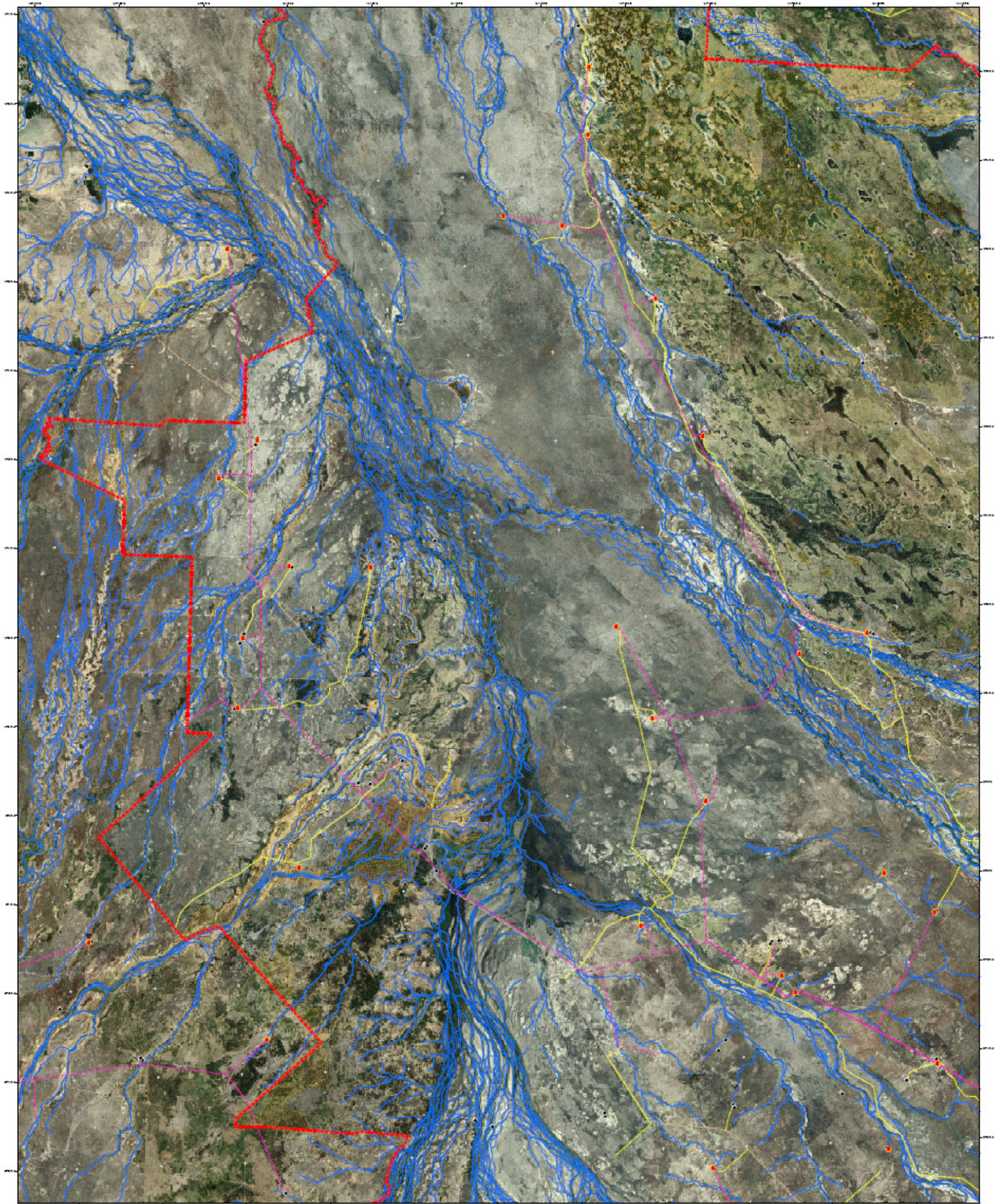
McKinlay Shire Council
 Natural Hazard Risk Assessment
 Flood, Bushfire & Landslip Hazards

Job Number 41-24850
 Revision A
 Date 15 May 2012

Figure A1

© 2012 EHD. All rights reserved. This map, EHD and DATA.CUSTOMER name no representations or warranties about its accuracy, reliability, completeness or suitability for any particular purpose and cannot accept liability and responsibility of any kind (whether in contract, tort or otherwise) for any expenses, losses, damages and/or costs (including indirect or consequential damage) which are or may be incurred by any party as a result of the map being inaccurate, incomplete or unreliable in any way and for any reason. Data source: GSD 2012 (Shire Boundary, Cadastre, Rail, Electricity Network, DEM), Queensland Australia 2009 (DEM DATA TOPO 2008 Series 3), McKinlay Shire Council 2012 (Unsealed Roads), GPR 2009 (Bushfire Risk), Bing Maps. Created by GHD.

Map 2 – A1 Flood Bushfire & Landslip Hazards – Rural Area



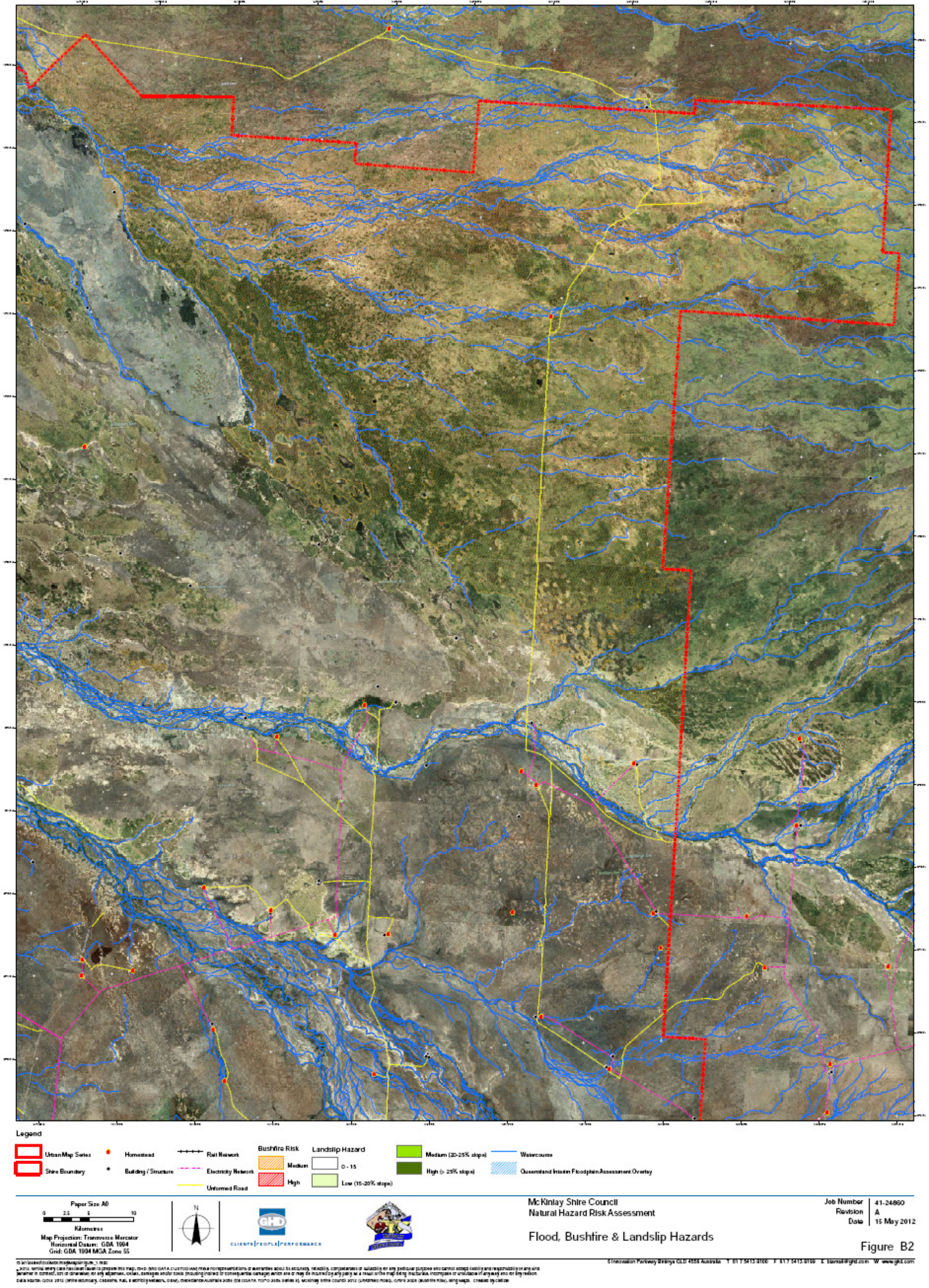
McKinlay Shire Council
 Natural Hazard Risk Assessment
 Flood, Bushfire & Landslip Hazards

Job Number 41-24860
 Revision A
 Date 15 May 2012

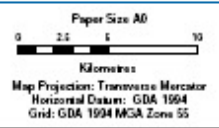
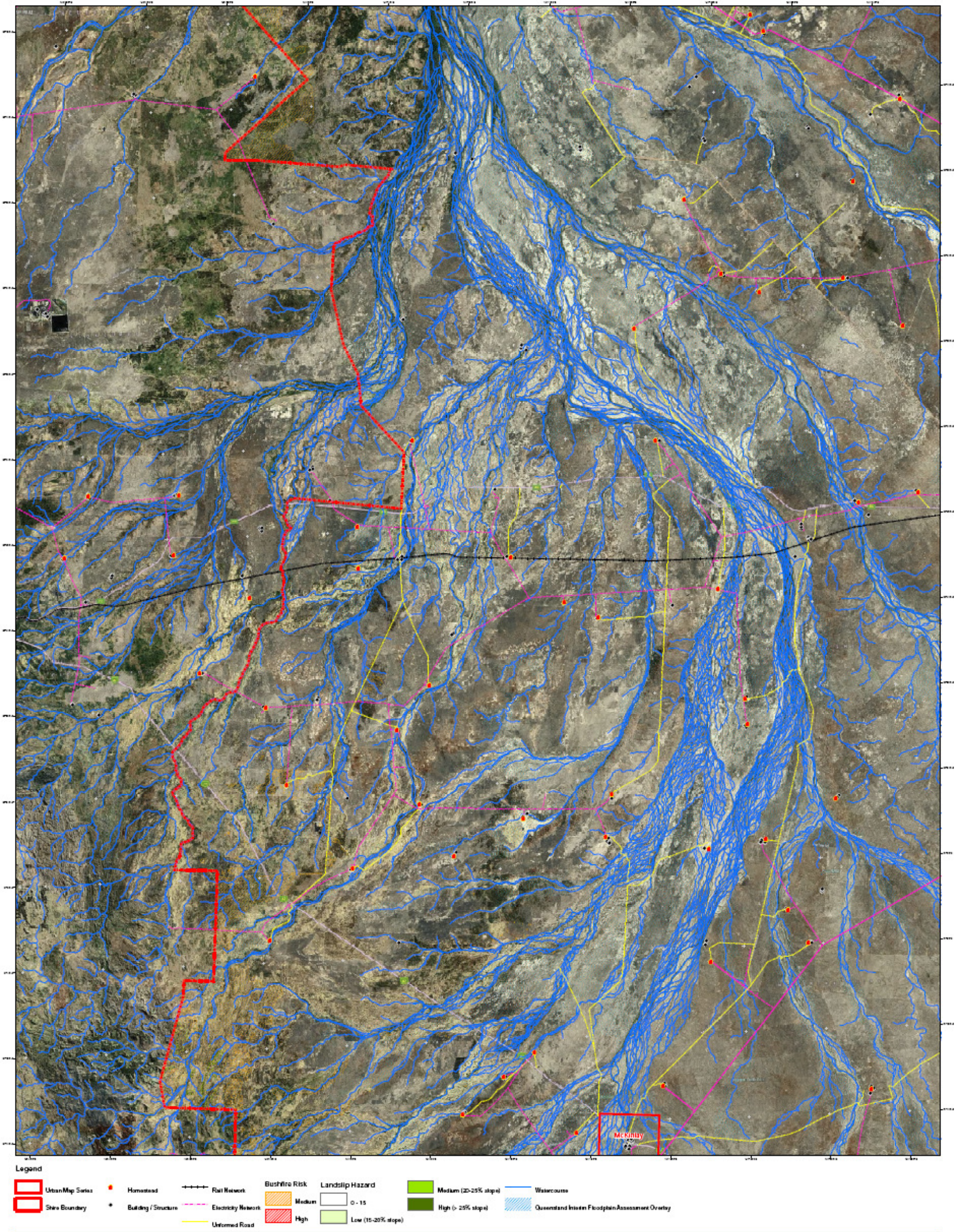
Figure B1

© 2012 GHD. All rights reserved. This map and its data are provided for your information only and do not constitute a warranty of accuracy, reliability, completeness or suitability for any particular purpose and cannot be used for any purpose other than that for which it was prepared. GHD and its employees, officers, directors and contractors shall not be liable for any damages, including consequential damages, arising out of or from the use of this map or any data contained herein. The map data is provided for your information only and does not constitute a warranty of accuracy, reliability, completeness or suitability for any particular purpose and cannot be used for any purpose other than that for which it was prepared. GHD and its employees, officers, directors and contractors shall not be liable for any damages, including consequential damages, arising out of or from the use of this map or any data contained herein.

Map 3 – B1 Flood, Bushfire & Landslip Hazards – Rural Area



Map 4 – B2 Flood, Bushfire & Landslip Hazards – Rural Area

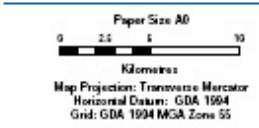
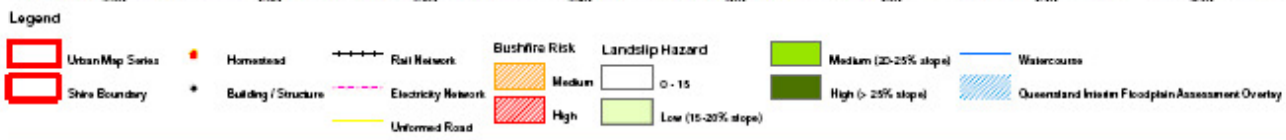
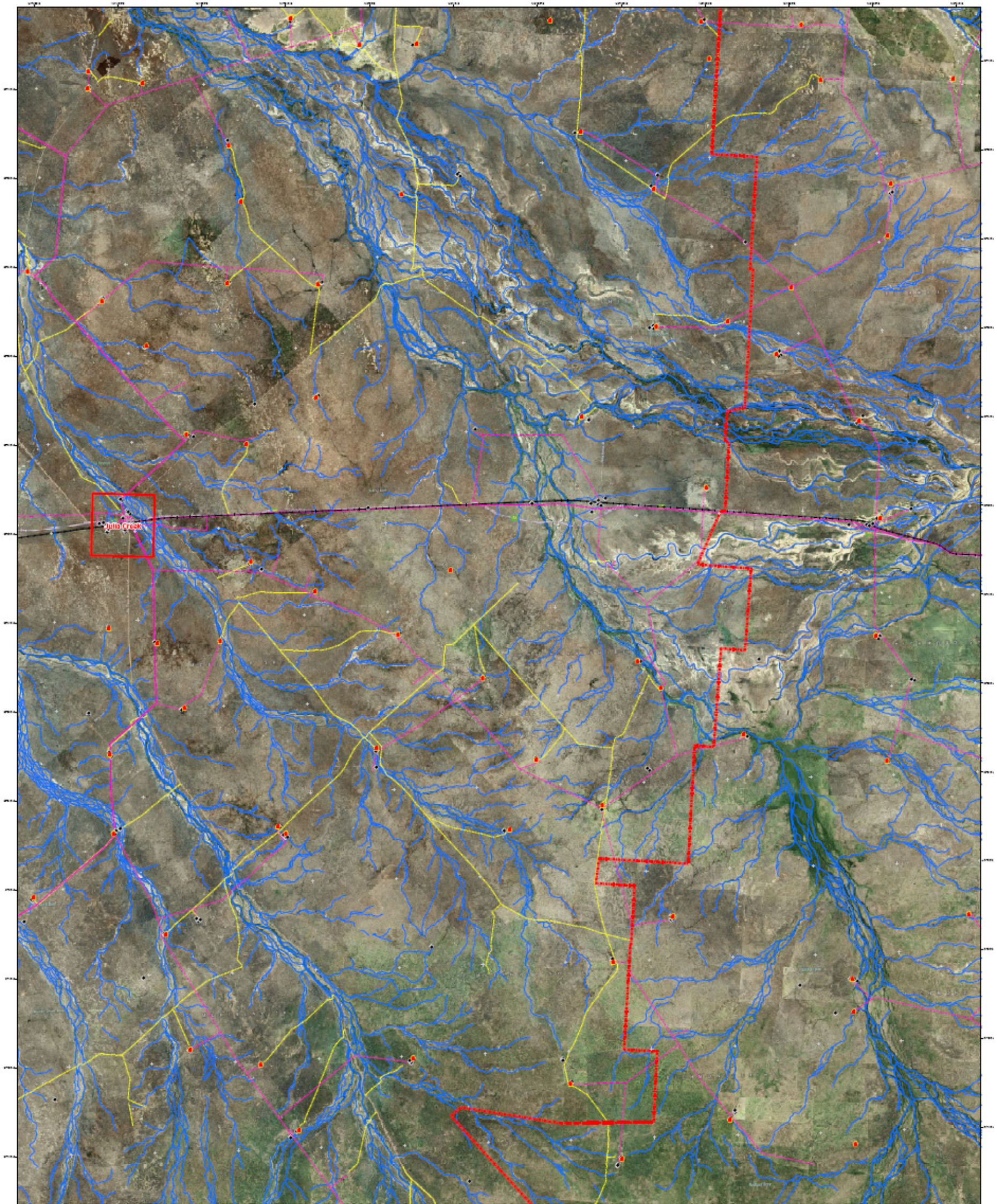


McKinlay Shire Council
 Natural Hazard Risk Assessment
 Flood, Bushfire & Landslip Hazards

Job Number | 41-24860
 Revision | A
 Date | 15 May 2012

Figure C1

Map 5 – C1 Flood, Bushfire & Landslip Hazards – Rural Area



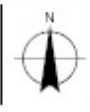
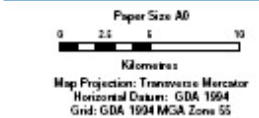
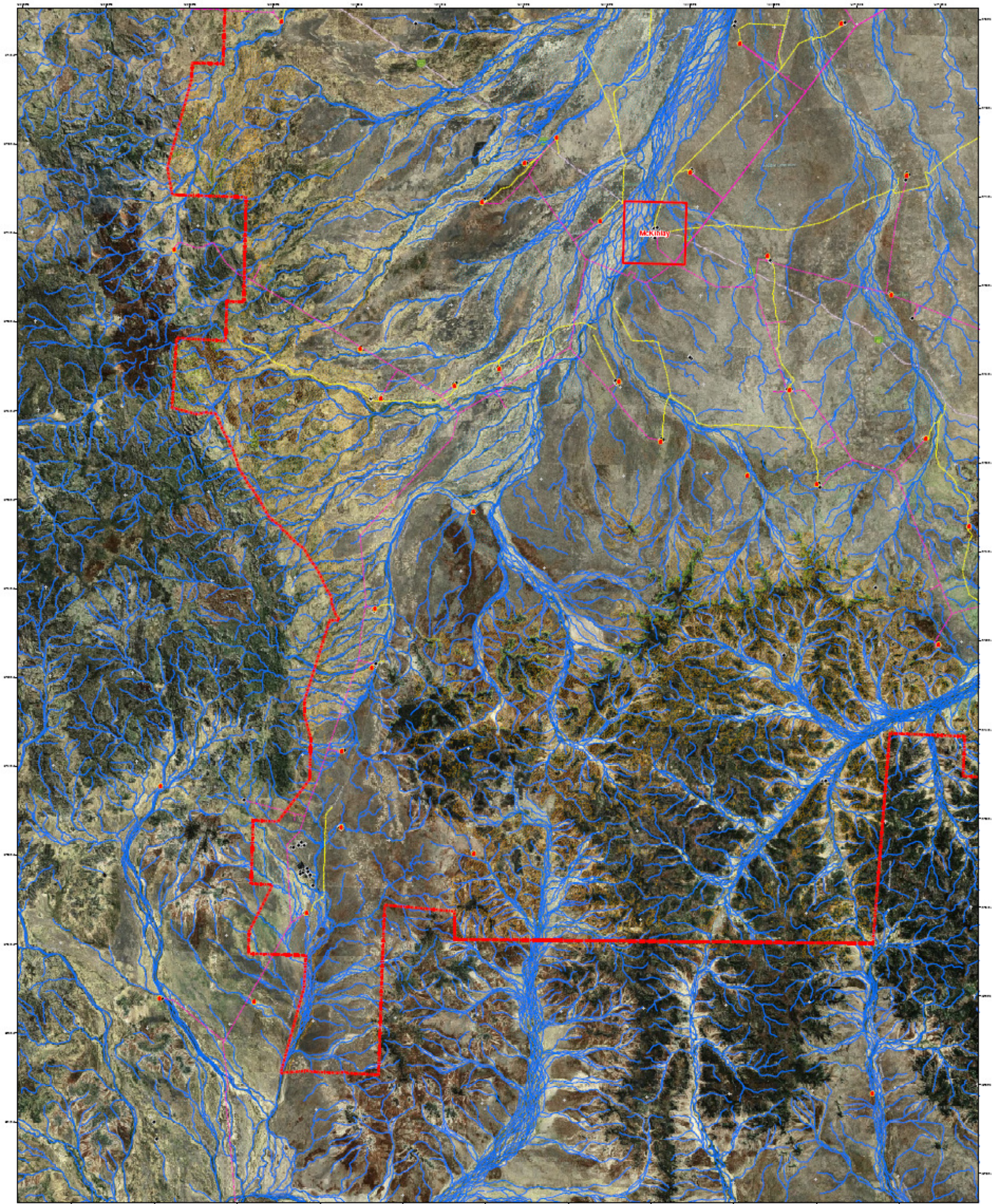
McKinlay Shire Council
 Natural Hazard Risk Assessment
 Flood, Bushfire & Landslip Hazards

Job Number 41-24890
 Revision A
 Date 15 May 2012

Figure C2

© All rights reserved. This map and any data contained herein are the property of GHD and its licensors. No warranty is made by GHD or its licensors as to the accuracy, reliability, completeness or suitability for any particular purpose and GHD and its licensors accept no liability or responsibility for any loss or damage, whether direct or indirect, arising from the use of this map or any data contained herein. GHD and its licensors are not liable for any loss or damage, whether direct or indirect, arising from the use of this map or any data contained herein. GHD and its licensors are not liable for any loss or damage, whether direct or indirect, arising from the use of this map or any data contained herein. GHD and its licensors are not liable for any loss or damage, whether direct or indirect, arising from the use of this map or any data contained herein.

Map 6 – C2 Flood, Bushfire & Landslip Hazards – Rural Area



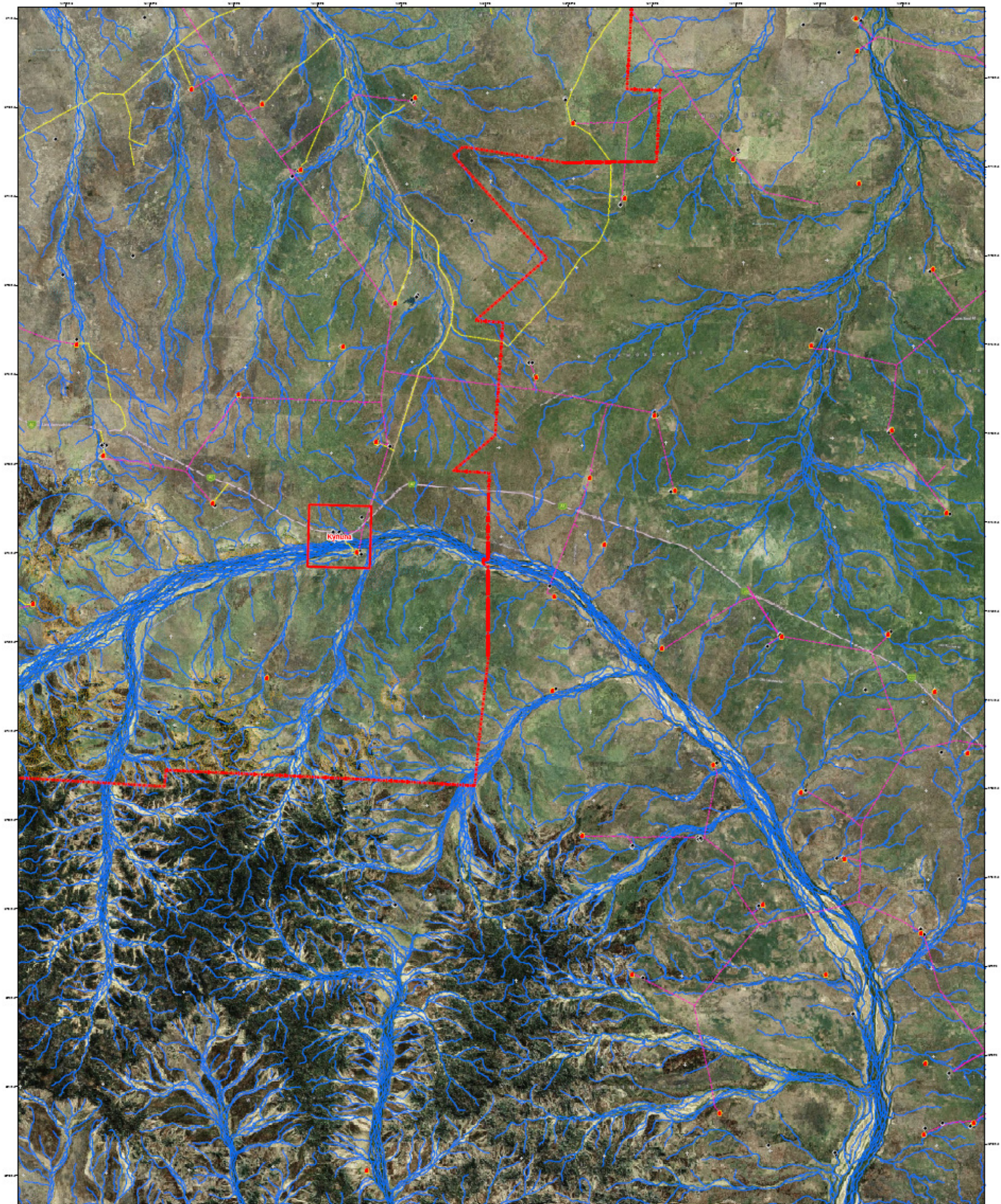
McKinnlay Shire Council
 Natural Hazard Risk Assessment
 Flood, Bushfire & Landslip Hazards

Job Number 41-24850
 Revision A
 Date 15 May 2012

Figure D1

© Invision Parkway Winaya QLD 4558 Australia T 61 7 5413 9100 F 61 7 5413 9150 E info@ghd.com W www.ghd.com
 2012. While every care has been taken to prepare this map, GHD and DATA do not warrant the accuracy, reliability, completeness or suitability for any particular purpose and cannot accept liability for any loss or damage in connection with the use of the map. GHD and DATA do not warrant the accuracy, reliability, completeness or suitability for any particular purpose and cannot accept liability for any loss or damage in connection with the use of the map. GHD and DATA do not warrant the accuracy, reliability, completeness or suitability for any particular purpose and cannot accept liability for any loss or damage in connection with the use of the map. GHD and DATA do not warrant the accuracy, reliability, completeness or suitability for any particular purpose and cannot accept liability for any loss or damage in connection with the use of the map.

Map 7 – D1 Flood, Bushfire & Landslip Hazards – Rural Area



Legend	
	Urban Map Series
	Shire Boundary
	Homestead
	Building / Structure
	Rail Network
	Electricity Network
	Unformed Road
	Bushfire Risk
	Medium
	High
	Landslip Hazard
	0 - 15
	Low (15-20% slope)
	Medium (20-25% slope)
	High (> 25% slope)
	Watercourses
	Queensland Instream Floodplain Assessment Overlay

Paper Size A0
 0 2.5 5 10
 Kilometres
 Map Projection: Transverse Mercator
 Horizontal Datum: GDA 1994
 Grid: GDA 1994 MGA Zone 55



McKinlay Shire Council
 Natural Hazard Risk Assessment

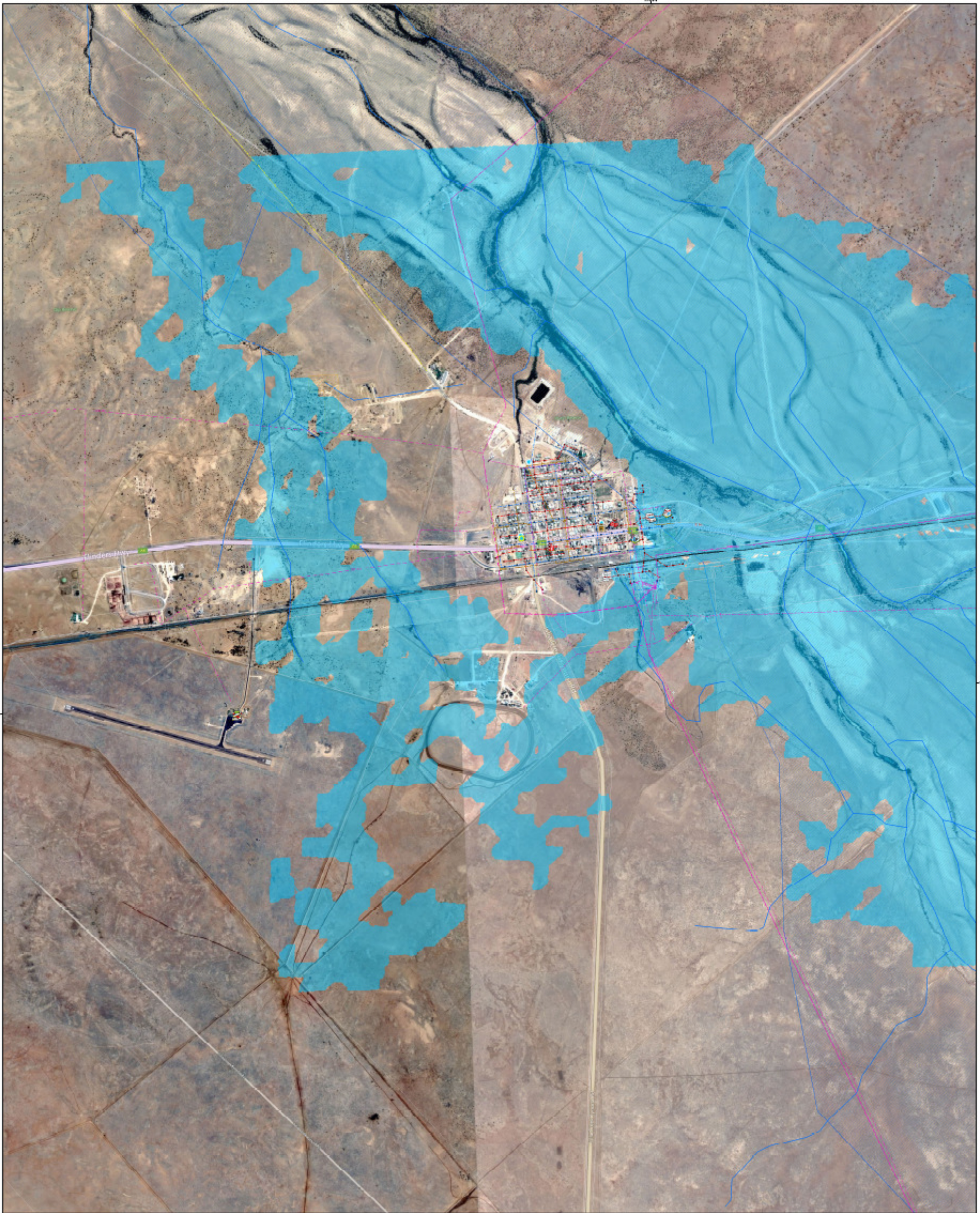
Flood, Bushfire & Landslip Hazards

Job Number 41-24890
 Revision A
 Date 15 May 2012

Figure D2

This map is based on data from various sources and is provided as a guide only. It is not intended to be used for any purpose other than that for which it was prepared. The Council and GHD accept no liability for any loss or damage arising from the use of this map. The map is not to be used for any purpose other than that for which it was prepared. The Council and GHD accept no liability for any loss or damage arising from the use of this map. The map is not to be used for any purpose other than that for which it was prepared. The Council and GHD accept no liability for any loss or damage arising from the use of this map.

Map 8 – D2 Flood, Bushfire & Landslip Hazards



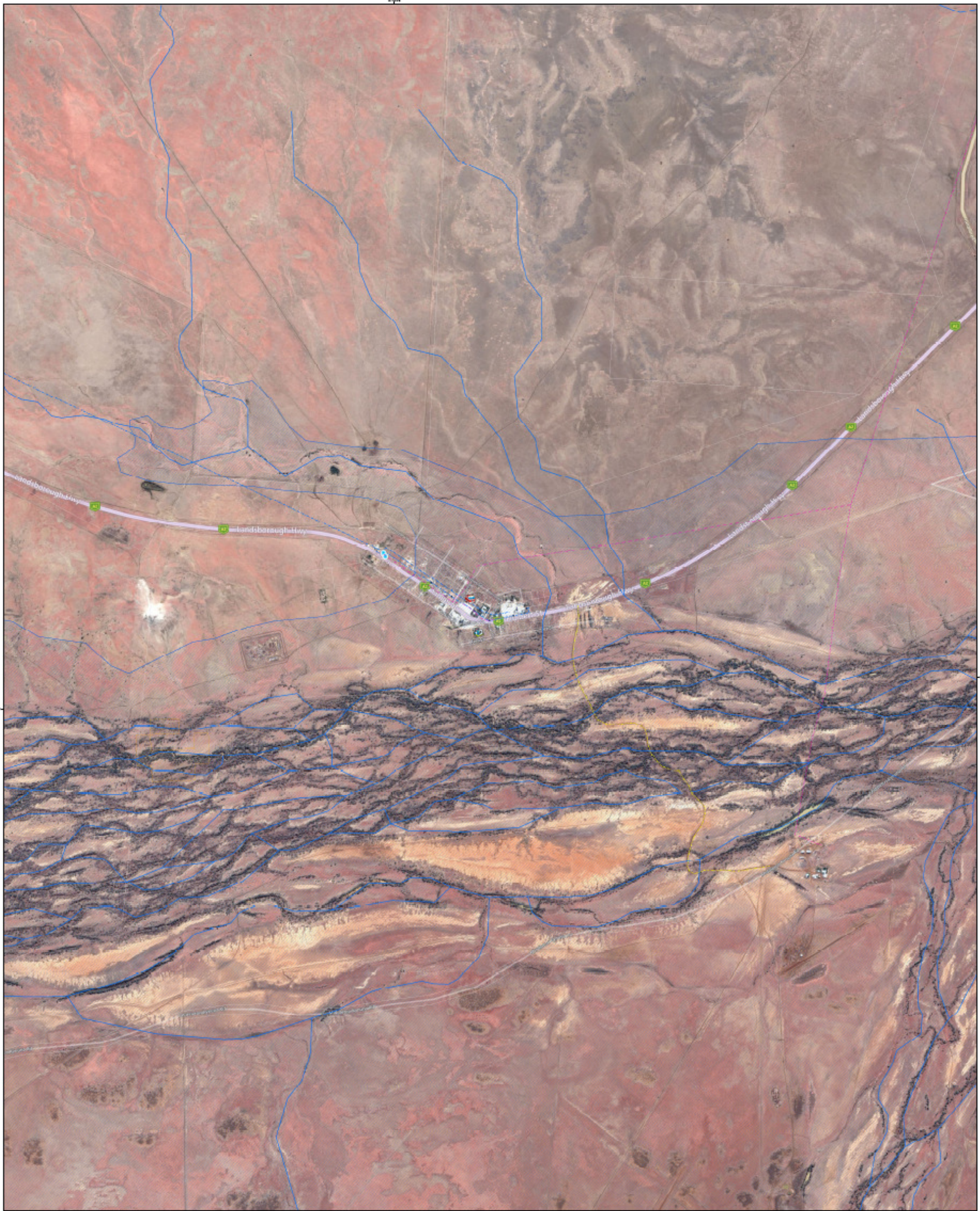
Legend

Type	Ambulance Station	Hospital	Cadastre	Unimproved Road	Sewer Pipeline	ARI 100 Flood Prone Land	Bushfire Risk	Landslip Hazard	Medium (20-25% slope)
Airport	Fire Station	Police Station	Watercourse	Water Storage	Stormwater Pipeline	222.0000001 - 255	Medium	0 - 15	High (> 25% slope)
Council Building	Rural Fire	School	Rail Network	Water Tank	Electricity Network	Water Supply Pipeline	High	Low (15-20% slope)	
Caravan Park									

<p>Paper Size A0 0 250 500 Meters Map Projection: Transverse Mercator Horizontal Datum: GDA 1994 Grid: GDA 1994 MGA Zone 55</p>		<p>CLIENTS PEOPLE PERFORMANCE</p>		<p>McKinlay Shire Council Natural Hazard Risk Assessment Flood, Bushfire & Landslip Hazards</p>	<p>Job Number 41-24850 Revision A Date 21 May 2012</p>	<p>Julia Creek</p>
---	--	---------------------------------------	--	---	--	--------------------

© 2012 GHD. All rights reserved. GHD and the GHD logo are trademarks of GHD. All other trademarks are the property of their respective owners. GHD and its consultants make no representations or warranties about the accuracy, reliability, completeness or suitability for any particular purpose and cannot accept liability and responsibility of any kind. Further to contract, but in reference to any expenses, losses, damages and/or costs (including indirect or consequential damage) which are or may be incurred by any party as a result of the map being inaccurate, incomplete or unreliable in any way, and for any reason. Data source: GHD 2012 (Site Boundary, Cadastre, Rail, Electricity Network, DEM, Queensland Australia 2008 (MERCATOR TOPIC 255k Series 1), McKinlay Shire Council 2012 (Unimproved Road, Water, Sewer, Stormwater Infrastructure), GHD 2009 (Boulder Plot), Bing Maps). Created by GHD.

Map 9 – Flood, Bushfire & Landslip Hazards – Urban Area (Julia Creek)



Legend

Ambulance Station	Hospital	Cadastral	Unimproved Road	Sewer Pipeline	ARI 100 Flood Prone Land	Bushfire Risk	Landslip Hazard	Medium (20-25% slope)
Airport	Fire Station	Watercourse	Water Storage	Stormwater Pipeline	222.0000001 - 255	Medium	0 - 15	High (> 25% slope)
Council Building	Rural Fire	Police Station	Water Sore	Queensland Inland Floodplain Assessment Overlay	High	Low (15-20% slope)		
Caravan Park	School	Rail Network	Water Supply Pipeline					
		Electricity Network						

<p>Paper Size A4 0 250 500 Meters Map Projection: Transverse Mercator Horizontal Datum: GDA 1994 GVD: GDA 1994 MGA Zone 55</p>		<p>CLIENTS PEOPLE PERFORMANCE</p>		<p>McKinlay Shire Council Natural Hazard Risk Assessment Flood, Bushfire & Landslip Hazards</p>	<p>Job Number 41-24850 Revision A Date 21 May 2012</p>
--	--	---------------------------------------	--	---	--

© 2012 GHD. All rights reserved. GHD and the GHD logo are trademarks of GHD. GHD does not warrant the accuracy, reliability, completeness or suitability of any information provided in this map for any purpose. GHD is not responsible for any loss or damage arising from the use of this map. Data source: GHD 2012 (Shire Boundary, Cadastral, Rail, Electricity Network, DEM, Queensland Australia 2008 (MRC DATA TOPO 250k Series 2), McKinlay Shire Council 2012 (Performance Road, Water, Sewer, Stormwater Infrastructure), GPRS 2008 (Bundaberg), Bing Maps. Created by GHD.

Map 10 – Flood, Bushfire & Landslip Hazards – Urban Area (Kynuna)



Legend	
Airport	Ambulance Station
Council Building	Fire Station
Caravan Park	Rural Fire
Hospital	Police Station
School	Cadastre
Watercourse	Water Storage
Rail Network	Water Bore
Electricity Network	Water Supply Pipeline
Unsealed Road	Sewer Pipeline
Stormwater Pipeline	ARI 100 Flood Prone Land
Queensland Interim Floodplain Assessment Overlay	Medium
High	Landslip Hazard 0 - 15
Low (15-20% slope)	High (> 20% slope)

Paper Size A0
 0 200 500
 Meters
 Map Projection: Transverse Mercator
 Horizontal Datum: GDA 1994
 GCR: GDA 1994 MGA Zone 55



McKinlay Shire Council
 Natural Hazard Risk Assessment
 Flood, Bushfire & Landslip Hazards

Job Number | 41-24860
 Revision | A
 Date | 21 May 2012

McKinlay

© 2012. All rights reserved. This map is a representation of the information available at the time of preparation. It is not intended to be used for any purpose other than that for which it was prepared. The user of this map is advised to verify the accuracy of the information shown on this map. The user of this map is advised to verify the accuracy of the information shown on this map. The user of this map is advised to verify the accuracy of the information shown on this map. The user of this map is advised to verify the accuracy of the information shown on this map.

Map 11 – Flood, Bushfire & Landslip Hazards – Urban Area (McKinlay)