

# January Newsletter



## Dates to Remember



- NICHOLAS CHAN Dietitian
- ALEX MCDONNELL Occupational Therapist
- HANNAH FOSTER Podiatrist
- ROBYN CADDELL Exercise Physiologist

PH: 07 4744 7600  
February ----- 12th



PH: 1300 754 637  
February ----- 4th



PH: 0436 360 935  
February ----- 27th



PH: 13 20 50  
September ----- 25th

HODGSON OPTICAL

PH: 4746 4000  
April ----- 7th  
May ----- 19th



PH: 0437 300 226  
March ----- 6th-7th  
June ----- 26th  
September --- 18th-19th  
December ----- 4th-5th



# Recent Events

## CLONCURRY SENIORS CHRISTMAS LUNCHEON



## CHRISTMAS DAY 2024







# JULIA CREEK

## CONSUMER ADVISORY NETWORK (CAN)

### COME AND ENGAGE WITH THE JULIA CREEK MPHS

THERE IS AN OPPORTUNITY AT JULIA CREEK MPHS CONSUMER ADVISORY GROUP (CAN) TO NOMINATE AS THE FOLLOWING:

- CHAIR
- VICE CHAIR
- COMMITTEE MEMBER

This allows the consumers to partner with NWHHS and Julia Creek MPHS to help co-design services, provide feedback on health plans and initiatives and review publications.

We're particularly looking for new consumers to join our Consumer Advisory Networks which meets quarterly to discuss the health needs of the community and hear from Executive members and NWHHS staff about current issues and opportunities.

Consumer advisory bodies provide valuable feedback to governing bodies about the quality of care and services they deliver. They help build a person-centred culture committed to quality health care.

**For more information PH: 07 4746 4000**



*A note from the midwifery team:*

HAVE YOU OR SOMEONE YOU KNOW RECENTLY FOUND OUT YOU'RE HAVING A BABY? 😊 IT CAN BE OVERWHELMING TO KNOW WHAT TO DO NEXT... BUT WE'RE HERE FOR YOU. ❤️

THE MIDWIFERY GROUP PRACTICE (MGP) PROGRAM PROVIDES OUTREACH MIDWIFERY TO CLONCURRY AND JULIA CREEK 🌸 THIS IS A FREE SERVICE WHERE WOMEN ARE SUPPORTED BY A KNOWN MIDWIFE THROUGHOUT THEIR PREGNANCY AND SIX WEEKS AFTER THE BIRTH OF THEIR BABY 🍼

MGP MIDWIVES WORK CLOSELY WITH THE MOUNT ISA HOSPITAL 🏥 OBSTETRICIANS AND OTHER HEALTH CARE PROFESSIONALS (INCLUDING PRIVATE OBSTETRICIANS), ALLOWING THE TEAM TO CARE FOR WOMEN AND THEIR FAMILIES THROUGH THEIR JOURNEY. 📱

YOU CAN SELF-REFER TO THE MGP PROGRAM (NO DOCTOR'S REFERRAL NEEDED) BY MESSAGING OR CALLING 0436 360 935.

YOU CAN ALSO SELF-REFER BY COMPLETING THE FORM BELOW, AND SPECIFY JULIA CREEK / CLONCURRY

[HTTPS://WWW.NORTHWEST.HEALTH.QLD.GOV.AU/ONLINE-REFERRAL-FOR-MIDWIFERY-GROUP-PRACTICE/](https://www.northwest.health.qld.gov.au/online-referral-for-midwifery-group-practice/)

## Patient Travel Subsidy Scheme

The Patient Travel Subsidy Scheme (PTSS) provides financial assistance for patients who are referred to specialist medical services not available at their local public hospital or health facility. Eligible patients can apply for a subsidy to assist with travel and accommodation costs of accessing specialist medical services.

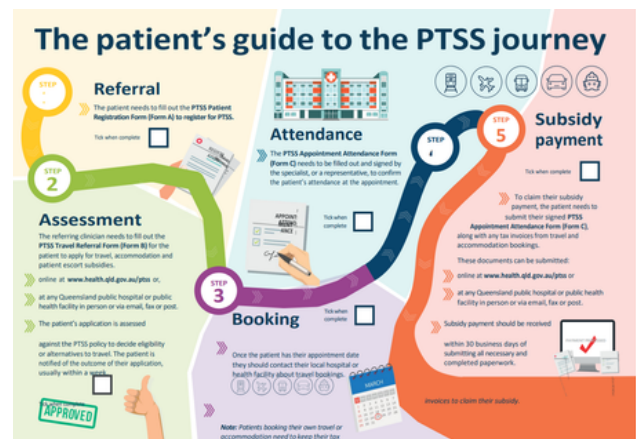
Patients approved for PTSS will receive a subsidy to attend the **closest** public hospital or health facility where the specialist medical treatment is available. Patients travelling to access private specialist services may be eligible for a subsidy if the service is not available within 50 kilometres of the patient's closest public hospital or health facility.

The Scheme is Queensland Government funded and administered through Queensland Health. It aims to support Queenslanders to access specialist medical treatment wherever they live in the state.

### New to PTSS

1. Complete Form A – to register for PTSS
2. Complete Form B – to apply for travel, accommodation and escort subsidies (conditions apply). Have your appointment booked, submit forms, with your letter of appointment to your local health facility to **before** you travel. Admin can arrange for Dr signature on form, not necessary to have an appointment for this. Admin can apply for bus, train, flights and Health Card holders accommodation.
3. Take a Form C to be filled out and signed by the specialist or representative to confirm attendance. Return the completed form to your health facility to lodge for processing, with receipts for fuel and accommodation.
4. Complete Form D if you are not staying in commercial accommodation (ask for the form when making your application).
5. Subsidy payment should be received within 30 business days of submitting the return paperwork. There is a time limit of 1 year from the appointment date to claim.

Forms A B C D are available online at [www.qld.gov.au/health/services/travel/subsidies](http://www.qld.gov.au/health/services/travel/subsidies) or from the local health facility.



# Sexual Health Screening

## JULIA CREEK MPHS

We offer **FREE** and **CONFIDENTIAL** sexual health screening conducted by our nurses in our Julia Creek MPHS emergency department, for all ages, sex and orientation.

All results are directly sent to Mount Isa Sexual health to secure your confidentiality.

No appointment necessary, but if you prefer you can call **PH: 4746 4000** to make an appointment.



# WE ARE HIRING

FULL TIME PERMANENT GROUNDSMAN  
CASUAL - OPERATIONAL STAFF

Please contact Kellie Leon - 4746 4000



**WE WANT YOUR FEEDBACK!**  
SHARE YOUR JULIA CREEK MPHS  
EXPERIENCE WITH US.  
GOOD OR BAD, IT IS ALL WELCOME.