



# NEWSLETTER

October, 2024

**Julia Creek**  
MPHS



# Dates to Remember

## OCTOBER

**25TH OCT MIDWIFE CLINIC** PH: 0439 451 537

**28TH OCT PHYISOTHERAPY** PH: 4746 4000  
(TELEHEALTH)

**30TH OCT ALLIED HEALTH** PH: 07 0744 7600  
DIETITIAN, OCCUPATIONAL THERAPIST, EXERCISE PHYSIOLOGIST

## NOVEMBER

**12TH NOV MIDWIFE CLINIC** PH: 0439 451 537

**13TH NOV PHYISOTHERAPY** PH: 4746 4000  
(FACE TO FACE)

**25TH NOV PHYISOTHERAPY** PH: 4746 4000  
(TELEHEALTH)

## DECEMBER

**2ND - 6TH DEC DR FARZAND ALI** PH: 4746 4000

**5TH - 6TH DEC TRUE OUTREACH CLINIC** PH: 0437 300 226

**11TH DEC PHYISOTHERAPY** PH: 4746 4000  
(FACE TO FACE)

**16TH DEC OPTOMETRIST- MARTIN HODGSON** PH: 4746 4000

**23RD DEC PHYISOTHERAPY** PH: 4746 4000  
(TELEHEALTH)



# Recent Events





# Wattle Glen Happy hour

Thank you to all who attended our first Wattle Glen happy hour!

A special thank you to Officer Raigan and her mate Teeter the police sheep, having you both visit brought so many smiles to all.

Our Happy hour is an opportunity for our residents, their family members, staff and community members to gather together on the last Friday of the month. Have a drink, a few laughs & banter.

We hope to see you all at our next happy hour  
-October 25th



## A note from the Midwife:

Have you or someone you know recently found out you're having a baby? 🤰

It can be overwhelming to know what to do next... but we're here for you.



The Midwifery Group Practice (MGP) program provides outreach Midwifery to Cloncurry and Julia Creek 🌸 This is a free service where women are supported by a known midwife throughout their pregnancy and six weeks after the birth of their baby 🤱

MGP midwives work closely with the Mount Isa Hospital 🏥 obstetricians and other health care professionals (including Private Obstetricians), allowing the team to care for women and their families through their journey.

📱 You can self-refer to the MGP program (no doctor's referral needed) by messaging or calling 0436 360 935.

You can also self-refer by completing the form below, and specify Julia Creek / Cloncurry

<https://www.northwest.health.qld.gov.au/online-referral-for-midwifery-group-practice/>



### See Visiting Optometrist – Martin Hodgson

**MONDAY 16TH DECEMBER 2024**

Where: Julia Creek MPHS

Tel: 4746 4000

Please bring your Medicare card

A range of private spectacles available

Free government specs for pension / healthcare card holders



### Visiting Doctor – Farzand Ali

**2ND - 6TH DECEMBER 2024**

Where: Julia Creek MPHS

Tel: 4746 4000



# MEET OUR TEAM



**NAME:**

Cheyenne Roberts

**POSITION:**

Recreational officer & AIN

**PASSIONATE ABOUT:**

Anything outdoors, creative and My family.

**BUCKET LIST:**

Travel Australia and Go see the northern lights.

**NAME:**

Liz Hassett

**POSITION:**

Clinical Nurse

**PASSIONATE ABOUT:**

Family & Travel

**BUCKET LIST:**

Travel more - Visit Bora Bora.



**NAME:**

Rob Leon

**POSITION:**

Operational Services officer, Xray operator, Allied health assistant.

**PASSIONATE ABOUT:**

Camping, Fishing, Rugby league (Cowboys)

**BUCKET LIST:**

Travel and spend time with the grandkids.



# Patient Travel Subsidy Scheme

The Patient Travel Subsidy Scheme (PTSS) provides financial assistance for patients who are referred to specialist medical services not available at their local public hospital or health facility. Eligible patients can apply for a subsidy to assist with travel and accommodation costs of accessing specialist medical services.

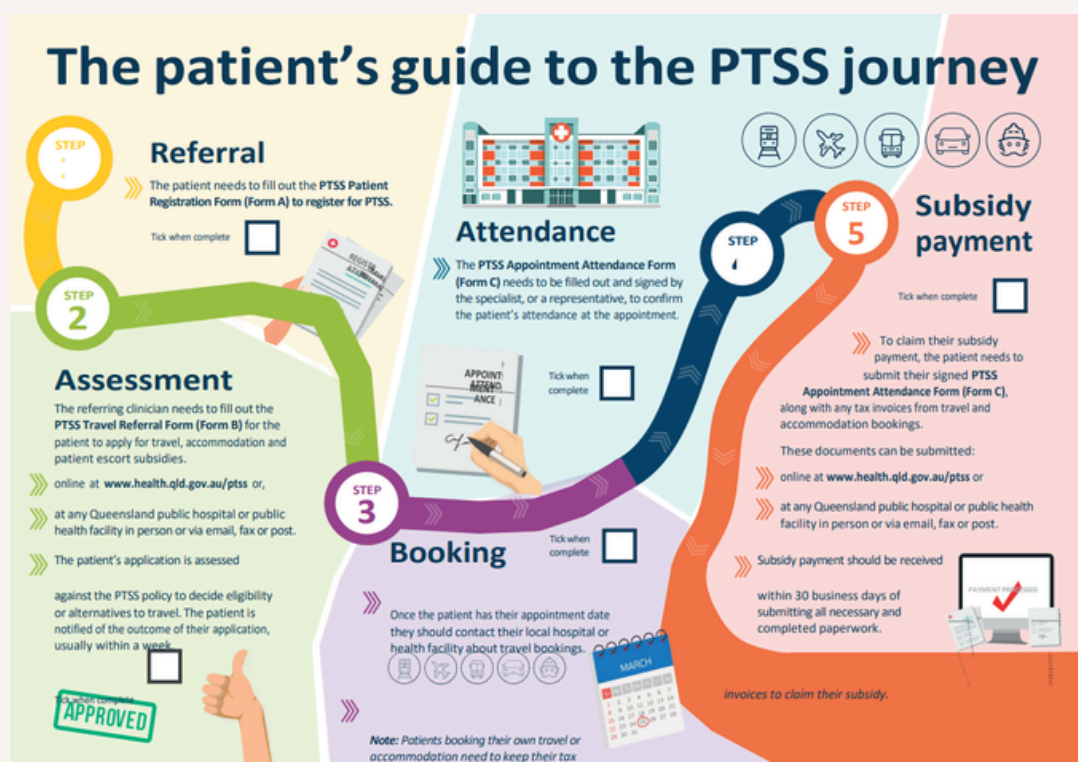
Patients approved for PTSS will receive a subsidy to attend the **closest** public hospital or health facility where the specialist medical treatment is available. Patients travelling to access private specialist services may be eligible for a subsidy if the service is not available within 50 kilometres of the patient's closest public hospital or health facility.

The Scheme is Queensland Government funded and administered through Queensland Health. It aims to support Queenslanders to access specialist medical treatment wherever they live in the state.

## New to PTSS

1. Complete Form A – to register for PTSS
2. Complete Form B – to apply for travel, accommodation and escort subsidies (conditions apply). Have your appointment booked, submit forms, with your letter of appointment to your local health facility to **before** you travel. Admin can arrange for Dr signature on form, not necessary to have an appointment for this. Admin can apply for bus, train, flights and Health Card holders accommodation.
3. Take a Form C to be filled out and signed by the specialist or representative to confirm attendance. Return the completed form to your health facility to lodge for processing, with receipts for fuel and accommodation.
4. Complete Form D if you are not staying in commercial accommodation (ask for the form when making your application).
5. Subsidy payment should be received within 30 business days of submitting the return paperwork. There is a time limit of 1 year from the appointment date to claim.

Forms A B C D are available online at [www.qld.gov.au/health/services/travel/subsidies](http://www.qld.gov.au/health/services/travel/subsidies) or from the local health facility.



# Sexual Health Screening

## JULIA CREEK MPHS

We offer **FREE** and **CONFIDENTIAL** sexual health screening conducted by our nurses in our Julia Creek MPHS emergency department, for all ages, sex and orientation.

All results are directly sent to Mount Isa Sexual health to secure your confidentiality.

No appointment necessary, but if you prefer you can call **PH: 4746 4000** to make an appointment.



## PATIENT TRAVEL REVIEW

North West Hospital and Health Service is committed to improving our current patient travel arrangements by introducing changes to provide a consistent level of service for our community.

We need your feedback and Input to Improve the patient experience when traveling for care and treatment. please scan the QR code and complete a short survey.



THANK YOU!

**WE WANT YOUR FEEDBACK!**

**SHARE YOUR JULIA CREEK MPHS EXPERIENCE WITH US.**

**GOOD OR BAD, IT IS ALL WELCOME.**

